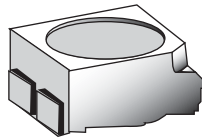


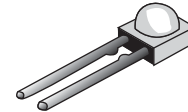
LEDs



TLLG4400



TLMV3100



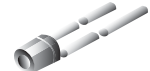
TLPG5600



TLLG5400



TLUV5300



TLVD4200

Low Current

Stock No.	Mfr.'s Type	Package	Color	Luminous Intensity/mcd			Angle of Half Intensity	Forward Voltage (V)			EACH		
				Min.	Typ.	Test Current/mA		Typ.	Max.	Test Current/mA	1-24	25-49	50-99
431-0127	TLLG4400	T1 (3 mm)	Green (564-577 nm)	0.63	1.2	2	±25	1.9	2.4	2	.16	.12	.10
431-0128	TLLG4401	T1 (3 mm)	Green (564-577 nm)	1.00	2.0	2	±25	1.9	2.4	2	.16	.13	.12
431-0129	TLLR4400	T1 (3 mm)	Red (611-660 nm)	0.63	1.2	2	±25	1.9	2.4	2	.18	.13	.12
431-0130	TLLR4401	T1 (3 mm)	Red (611-660 nm)	1.00	2.0	2	±25	1.9	2.4	2	.18	.14	.12
431-0131	TLLY4400	T1 (3 mm)	Yellow (581-597 nm)	0.63	1.2	2	±25	2.4	2.9	2	.18	.13	.12
431-0132	TLLY4401	T1 (3 mm)	Yellow (581-597 nm)	1.00	2.0	2	±25	2.4	2.9	2	.19	.14	.12
431-0133	TLLG5400	T1 3/4 (5 mm)	Green (564-577 nm)	0.63	1.2	2	±25	1.9	2.4	2	.16	.12	.10
431-0134	TLLG5401	T1 3/4 (5 mm)	Green (564-577 nm)	1.00	2.0	2	±25	1.9	2.4	2	.16	.12	.11
431-0135	TLLR5400	T1 3/4 (5 mm)	Red (611-660 nm)	0.63	1.2	2	±25	1.9	2.4	2	.18	.13	.12
431-0136	TLLR5401	T1 3/4 (5 mm)	Red (611-660 nm)	1.00	2.0	2	±25	1.9	2.4	2	.19	.14	.12
431-0137	TLLY5400	T1 3/4 (5 mm)	Yellow (581-597 nm)	0.63	1.2	2	±25	2.4	2.9	2	.18	.14	.12
431-0138	TLLY5401	T1 3/4 (5 mm)	Yellow (581-597 nm)	1.00	2.0	2	±25	2.4	2.9	2	.19	.14	.12

Bi-Color LEDs

431-0124	TLMV3100	SMD (PLCC-2)	Green/Red (565/635 nm)	2.50	6.0	10	±60	2.4	3.0	20	1.57	1.20	.91
431-0125	TLV5100	2.5 x 5 mm 3pin	Green/Red (565/635 nm)	0.63	1.0	10	±50	2.0	2.4	20	.43	.33	.25
431-0126	TLV5300	T1 3/4 (5 mm) 3 pin	Green/Red (565/635 nm)	1.00	2.5	10	±30	2.0	2.4	20	.41	.31	.24

Sideview LEDs

431-0107	TLPG5600	Side View LED	Green (564-577 nm)	0.63	1.5	10	±80	2.4	3.0	20	.25	.19	.15
431-0108	TLPH5600	Side View LED	Red (611-660 nm)	0.63	1.5	10	±80	2.0	3.0	20	.23	.18	.14
431-0109	TLPP5600	Side View LED	Pure green (555-567 nm)	0.63	1.6	10	±80	2.4	3.0	20	.23	.18	.14
431-0110	TLPR5600	Side View LED	Red (611-660 nm)	1.00	2.5	10	±80	2.0	3.0	20	.23	.18	.14
431-0111	TLPY5600	Side View LED	Yellow (581-597 nm)	0.63	1.5	10	±80	2.4	3.0	20	.26	.20	.16

Resistor LEDs for 12 V Supply Voltage

431-0104	TLRG4420	T1 (3 mm)	Green (564-577 nm)	1.60	4.0	12	±30	10.0	12.0	12	.23	.18	.14
431-0105	TLRH4420	T1 (3 mm)	Red (611-660 nm)	1.60	4.0	12	±30	10.0	12.0	12	.23	.18	.14
431-0106	TLRY4420	T1 (3 mm)	Yellow (581-597 nm)	1.60	4.0	12	±30	10.0	12.0	12	.34	.25	.20

Backlighting LEDs

431-0097	TLVB4200	T1 (3 mm)	Blue (462-476 nm)	25.00	38.0	15	±85	3.9	4.5	20	.83	.66	.49
431-0098	TLVD4200	T1 (3 mm)	Red (611-660 nm)	40.00	80.0	15	±85	1.8	2.2	20	.27	.21	.16
431-0099	TLVG4200	T1 (3 mm)	Green (564-577 nm)	10.00	30.0	15	±85	2.4	3.0	20	.21	.17	.13
431-0100	TLVH4200	T1 (3 mm)	Red (611-660 nm)	10.00	25.0	15	±85	2.4	3.0	20	.22	.16	.13
431-0101	TLVP4200	T1 (3 mm)	Pure green (555-567 nm)	4.00	10.0	15	±85	2.4	3.0	20	.21	.16	.13
431-0102	TLVQ4200	T1 (3 mm)	Red (611-660 nm)	10.00	25.0	15	±85	2.4	3.0	20	.21	.16	.12
431-0103	TLVY4200	T1 (3 mm)	Yellow (581-597 nm)	10.00	20.0	15	±85	2.4	3.0	20	.21	.16	.13

Blinking LED

431-0096	TLBR5410	T1 3/4 (5 mm)	Red (611-660 nm)	1.00	1.6	5	±40	—	30/2	5	.60	.47	.36
----------	----------	---------------	------------------	------	-----	---	-----	---	------	---	-----	-----	-----

23

7-Segment Displays

Stock No.	Mfr.'s Type	Package	Color	Luminous Intensity (µcd)		Forward Voltage			EACH				
				Min.	Test Current (mA)	Typ.	Max.	Test Current (mA)	1-24	25-49	50-99	100-249	250-Up
431-0038	TDSG1150	7 mm	Green (555-565 nm)	450	10	2.4	3.0	20	1.50	1.19	.89	.80	.70
431-0039	TDSG1160	7 mm	Green (555-565 nm)	450	10	2.4	3.0	20	1.54	1.19	.89	.80	.70
431-0040	TDSG3150	10 mm	Green (555-565 nm)	450	10	2.4	3.0	20	1.37	1.08	.82	.73	.64
431-0041	TDSG3160	10 mm	Green (555-565 nm)	450	10	2.4	3.0	20	1.64	1.26	.95	.84	.74
431-0042	TDSG5150	13 mm	Green (555-565 nm)	700	10	2.4	3.0	20	1.31	1.00	.76	.67	.59
431-0043	TDSG5160	13 mm	Green (555-565 nm)	700	10	2.4	3.0	20	1.31	1.00	.76	.67	.59
431-0044	TDSL1150	7 mm	Low Current Red (635 nm)	180	2	1.8	2.4	2	1.82	1.37	1.05	.94	.82
431-0045	TDSL1160	7 mm	Low Current Red (635 nm)	180	2	1.8	2.4	2	1.82	1.37	1.05	.94	.82
431-0046	TDSL3150	10 mm	Low Current Red (635 nm)	180	2	—	1.8	2	1.82	1.40	1.05	.94	.82
431-0047	TDSL3160	10 mm	Low Current Red (635 nm)	180	2	—	1.9	2	1.82	1.40	1.05	.94	.82
431-0048	TDSL5150	13 mm	Low Current Red (635 nm)	280	2	1.8	2.4	2	1.82	1.37	1.05	.94	.82
431-0049	TDSL5160	13 mm	Low Current Red (635 nm)	280	3	1.8	2.4	2	1.82	1.37	1.05	.94	.82
431-0050	TDSO1150	7 mm	Hi Eff Red (635 nm)	450	10	2.0	3.0	20	1.54	1.16	.89	.80	.70
431-0051	TDSO1160	7 mm	Hi Eff Red (635 nm)	450	10	2.0	3.0	20	1.54	1.16	.89	.80	.70
431-0052	TDSO3150	10 mm	Hi Eff Red (635 nm)	450	10	2.0	3.0	20	1.41	1.06	.82	.73	.64
431-0053	TDSO3160	10 mm	Hi Eff Red (635 nm)	450	10	2.0	3.0	20	1.41	1.06	.82	.73	.64
431-0054	TDSO5150	13 mm	Hi Eff Red (635 nm)	700	10	2.0	3.0	20	1.31	.98	.76	.67	.59
431-0055	TDSO5160	13 mm	Hi Eff Red (635 nm)	700	10	2.0	3.0	20	1.31	.98	.76	.67	.59
431-0056	TDSR1350	13 mm	High Intensity Red (639 nm)	280	1	1.8	2.4	1	1.27	.96	.74	.66	.58
431-0057	TDSR1360	13 mm	High Intensity Red (639 nm)	280	1	1.8	2.4	1	1.27	.96	.74	.66	.58
431-0058	TDSY3150	10 mm	Yellow (585-594 nm)	450	10	2.4	3.0	20	1.41	1.06	.82	.73	.64
431-0059	TDSY3160	10 mm	Yellow (585-594 nm)	450	10	2.4	3.0	20	1.41	1.06	.82	.73	.64
431-0060	TDSY5150	13 mm	Yellow (585-594 nm)	700	10	2.4	3.0	20	1.31	.98	.76	.67	.59
431-0061	TDSY5160	13 mm	Yellow (585-594 nm)	700	10	2.4	3.0	20	1.27	1.00	.76	.67	.59

Contact your Allied Sales representative if lead free product is needed.